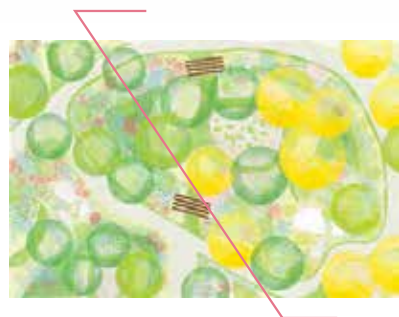




HABITAT ATTRACTED



DRY GARDEN PLANT PALETTE



Salvia leucantha, Mexican bush sage
size: 3-4 ft. tall and wide
water requirement: low
interest: spring and fall



Sedum mussbaumerianum, copperstone crop
size: 1ft. tall, 2-3 ft wide
water requirement: low
interest: year round



Quercus lobata, Valley Oak
size: 30-40' wide
water requirement: low
interest: year round



Sedum, turquoise tails
size: 12-18 in.
water requirement: low
interest: year round



Achillea millefolium var. californica, western yarrow
size: 1-2 ft. tall, 2-3 ft. wide
water requirement: low
interest: spring to summer



Senecio mandraliscae, blue chalk fingers
size: 1 ft. tall, 3-4 ft wide
water requirement: low
interest: year round



Muhlenbergia capillaris, Pink Muhly Grass
size: 2-4 ft mounds
water requirement: low
interest: fall



Eriogonum nudum, ella nelsons
size: 3 ft. tall, 2 ft. wide
water requirement: low
interest: spring to summer



Yucca, "Bright Star"
size: 2 ft. tall, 3 ft. wide
water requirement: low
interest: year round



Parkinsonia, desert museum palo verde
size: 25-30ft. tall and wide
water requirement: low
interest: spring to summer



Aloe ferox, cape aloe
size: 6-9 ft. tall, 4 ft. wide
water requirement: low
interest: fall to winter and year round



Cordyline, burgundy cordyline
size: 3 ft. tall and wide
water requirement: low
interest: year-round



Agave applanata, cream spike
size: 6 in. tall, 4 in. wide
water requirement: low
interest: year round



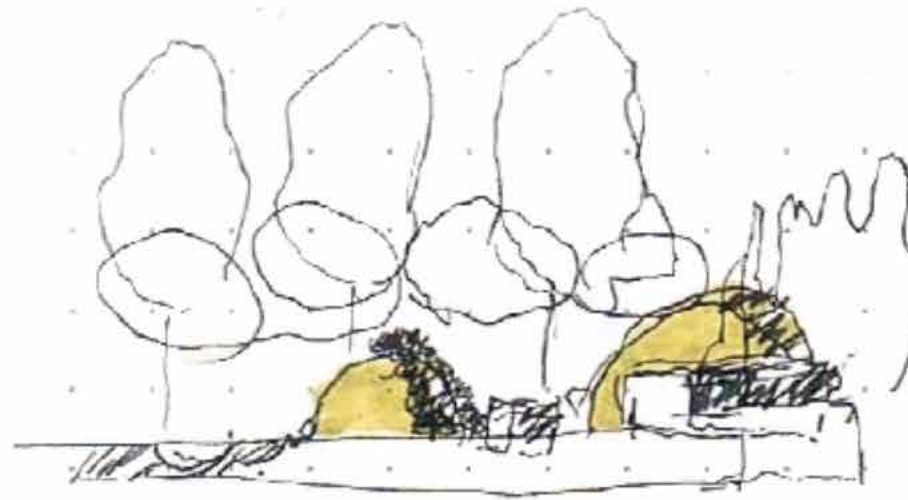
Echinocactus grusonii, golden barrel cactus
size: 3'4' tall
water requirement: low
interest: year round



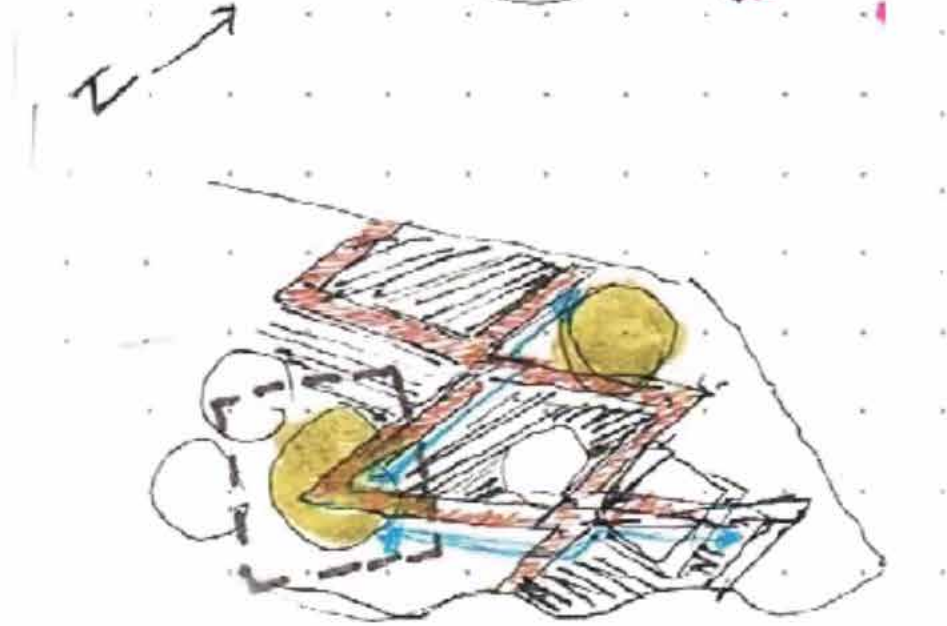
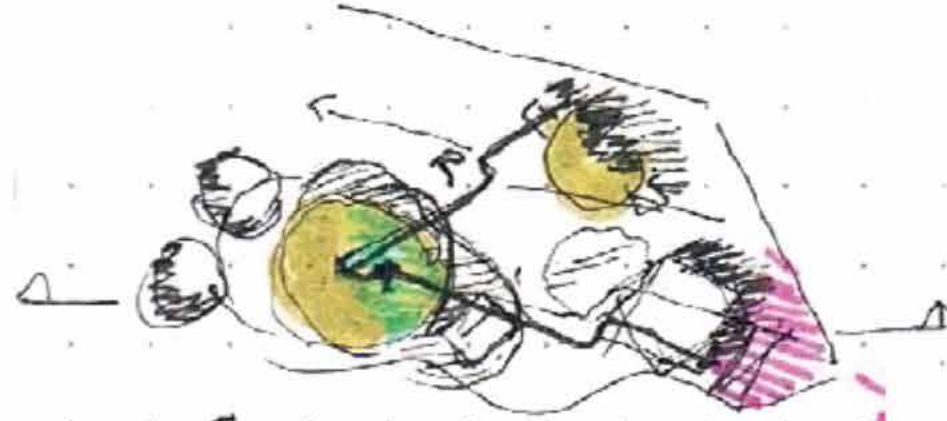
Festuca glauca, blue fescue grass
size: 6-10 years
water requirement: low
interest: year round



Nasella N. tenuissima, pony tail grass
size: 12-24 in.
water requirement: low
interest: year round



NOVEL



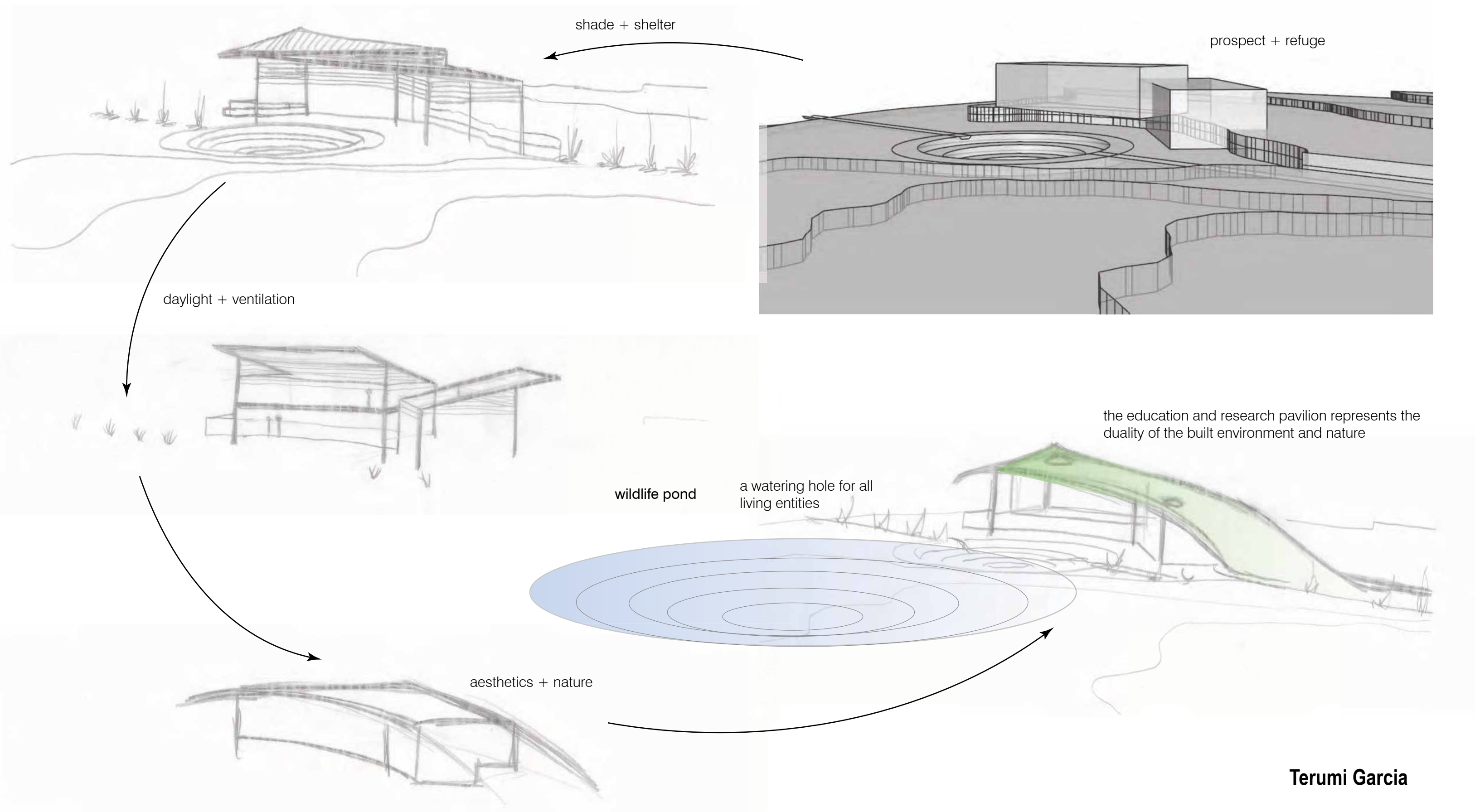
KNOLL





education + research pavilion
perspective

fixed programming diagrams
education + research pavilion



western sycamore
Platanus racemosa



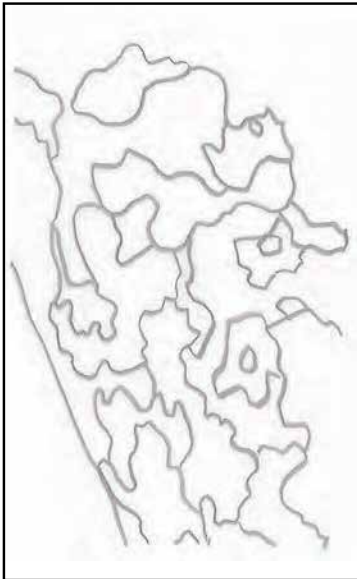
- Plant Description**
- **Plant Type:** Tree
 - **Size:** 20 - 115 ft tall, 50 ft wide
 - **Form:** Rounded, Upright Columnar
 - **Growth Rate:** Fast, Slow
 - **Flower Color:** Yellow, Cream, Orange, Brown
 - **Flowering Season:** Spring, Winter
 - **Dormancy:** Winter Deciduous



Landscaping Information

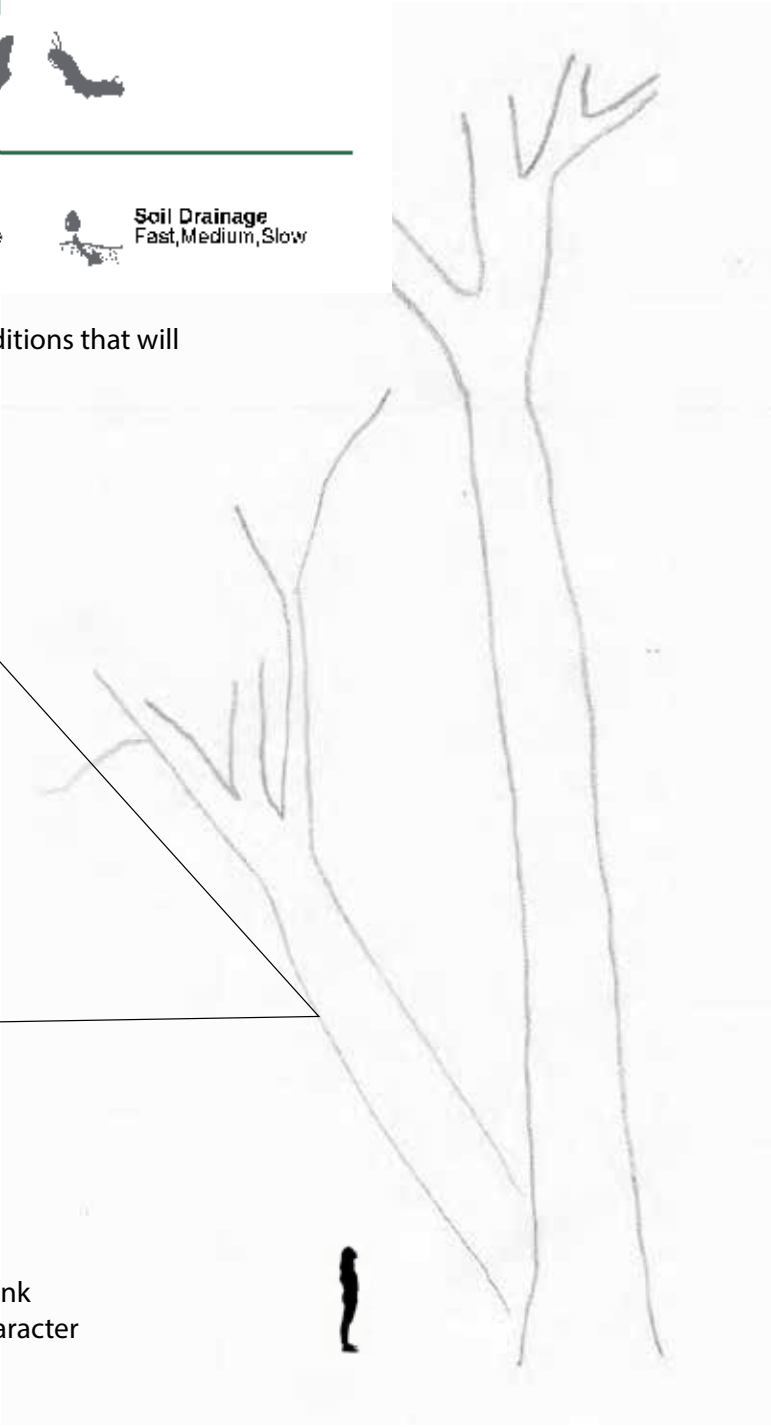
- Sun**
Full Sun
- Moisture**
Moderate - High
- Summer Irrigation**
Max 1x / month once established
- Soil Drainage**
Fast, Medium, Slow

a deciduous overstory tree will help create microclimate conditions that will encourage wildlife to the site

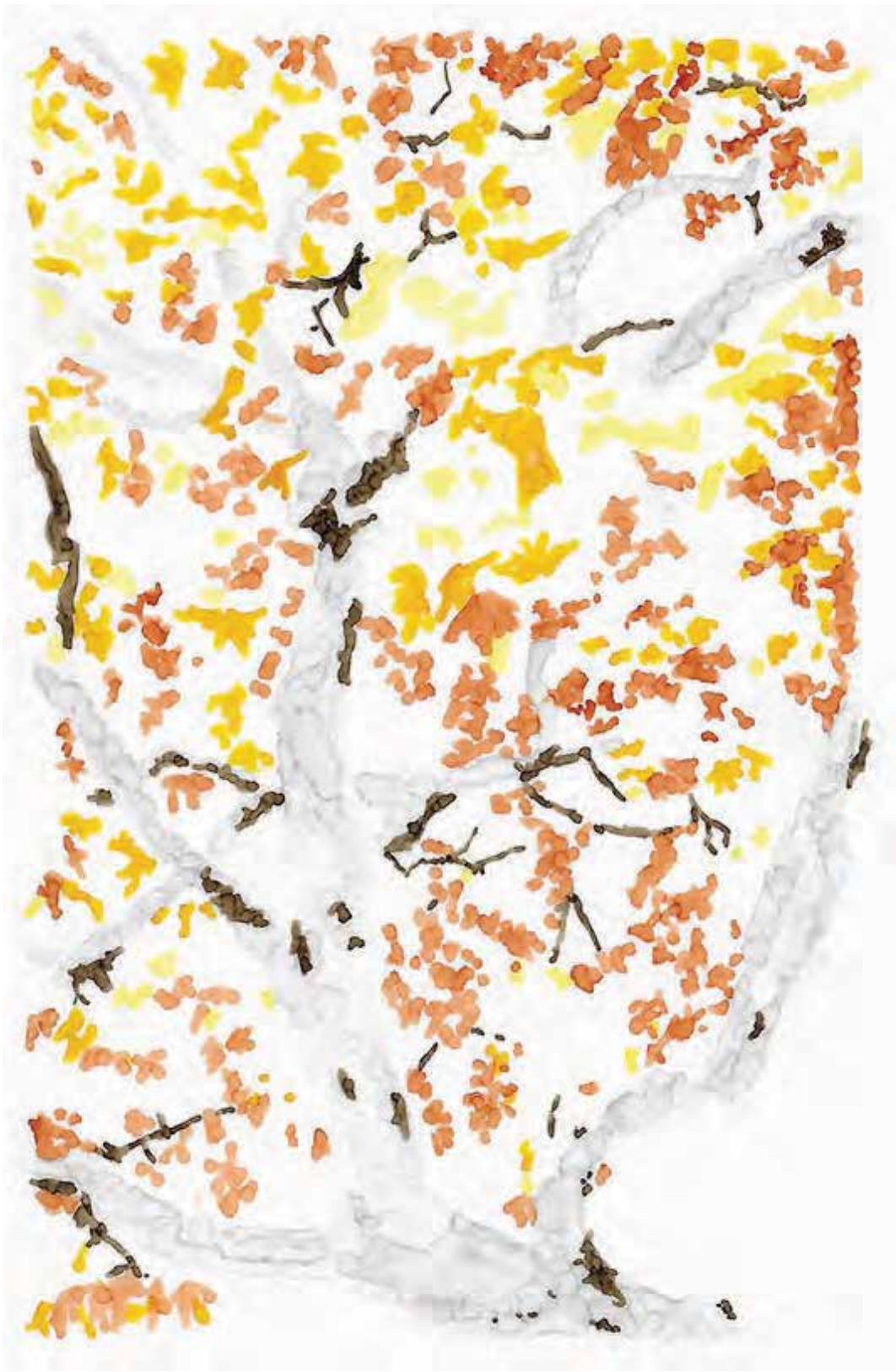


peeling and flaking bark is attractive and can be used as organic mulch for the botanical garden

planting several trees together, 3-5' apart, creates a multi-trunk landscape. planting at a 15 degree angle will give added character and a sweeping canopy



planting diagrams



Memorial Walk

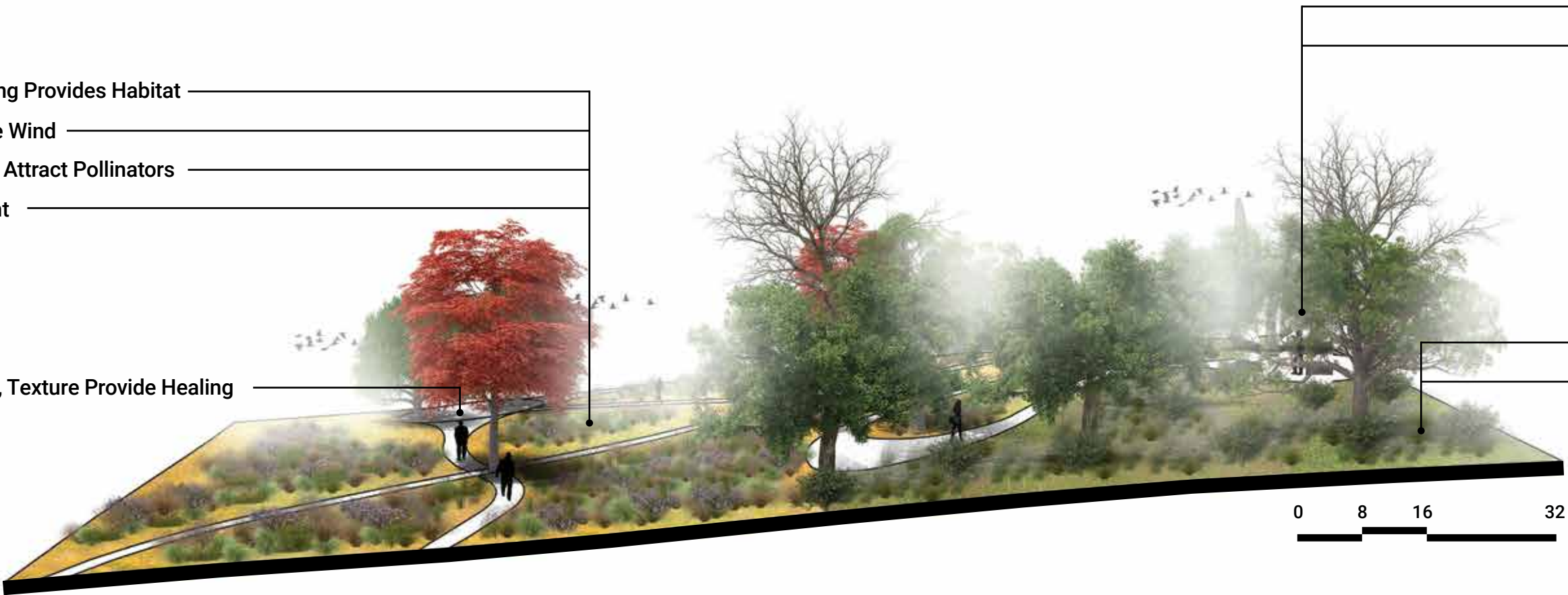
A Walk Through the Meadow

- Variety of Planting Provides Habitat
- Movement in the Wind
- Colored Flowers Attract Pollinators
- Exposure to Light

Color, Fragrance, Texture Provide Healing to Veterans

- Enclosed, Shaded, Intimate Space of Commemoration

- Monument, History, Learning
- Green Burial



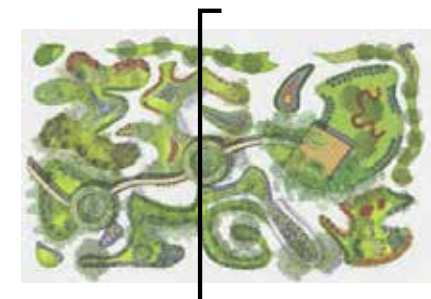
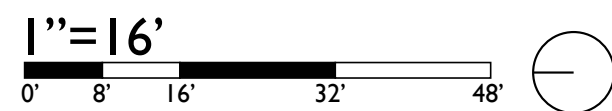
Memorial Walk

Experiencing the Memorial Walk



tree walk section cut

14





the bird hills

plant palette

The Bird Hills enables a vast community of Orange County hummingbirds to become attracted to the area. Throughout the two hills across from each other, one will find the gardens to maintain a red and orange color pallet that brings together a habitat in this diverse landscape.



CT

Chitalpa tashkentensis
Chitalpa
Height: 20-35ft
Spread: 20-35ft



CC

Caesalpinia cacalaco
Cascalote
Height: 15-20ft
Spread: 15-20ft



AS

Agastache
Hummingbird Mint
Height: 1-1.5ft
Spread: 1-1.5ft



TC

Tecoma capensis
Cape honeysuckle
Height: 3-5ft
Spread: 4-6ft



MC

Mimulus cardinalis
Scarlet Monkey Flower
Height: 1.5-3ft
Spread: 3ft



SA

Sphaeralcea ambigua
Apricot Mallow
Height: 3ft
Spread: 2-3ft



HP

Hesperaloe parviflora
Red Yucca
Height: 3f-4ft
Spread: 3-4ft



NM

Nolina microcarpa
Beargrass
Height: 6-7ft
Spread: 4-6ft



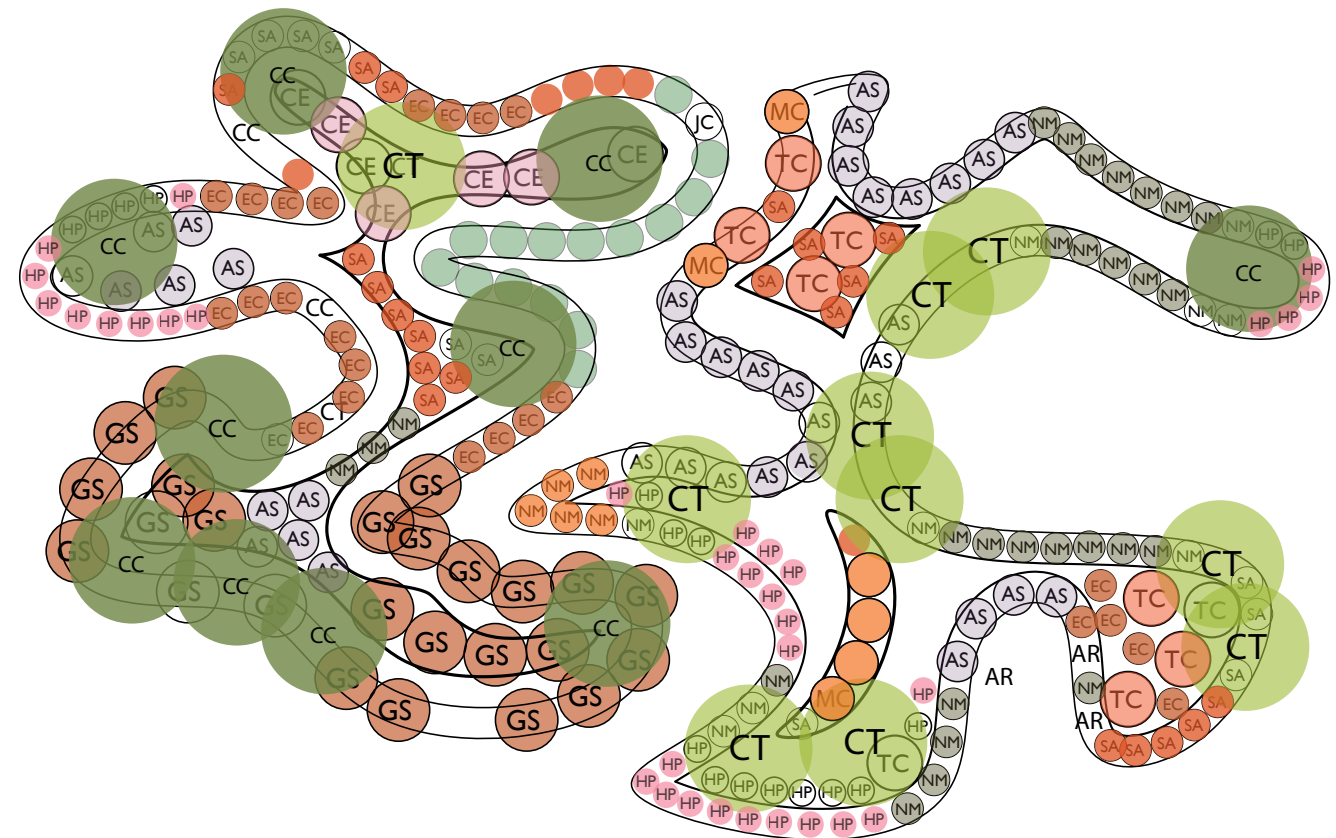
EC

Epilobium canum
California fuchsia
Height: 30in
Spread: 3ft



GS

Grevillea
Height: 3-4ft
Spread: 6-10ft



Black-chinned Hummingbird
Archilochus alexandri



Allen's Hummingbird
Selasphorus sasin



Anna's Hummingbird
Calypte anna



Rufous Hummingbird
Selasphorus rufus



Calliope Hummingbird
Stellula calliope



CE

Calliandra eriophylla
Pink Fairy Duster
Height: 2-3ft
Spread: 4-6ft

5

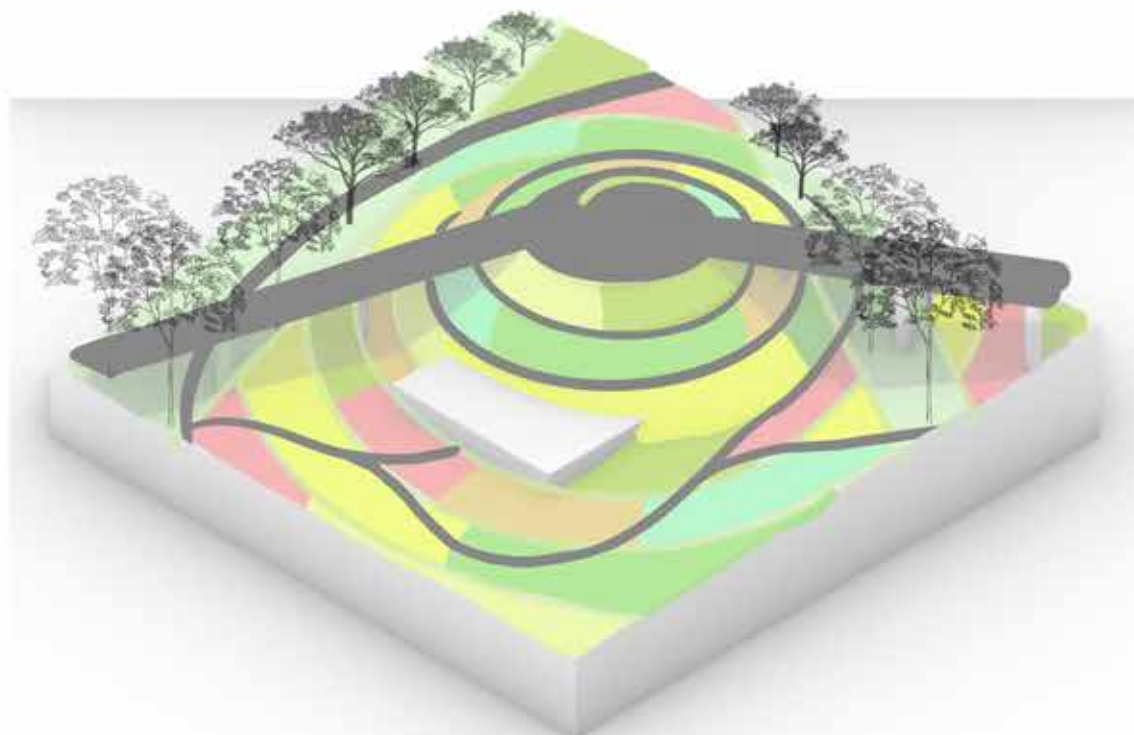
Bryan Covarrubias

EMBRACING NATURE

IDA LI



Ida Li



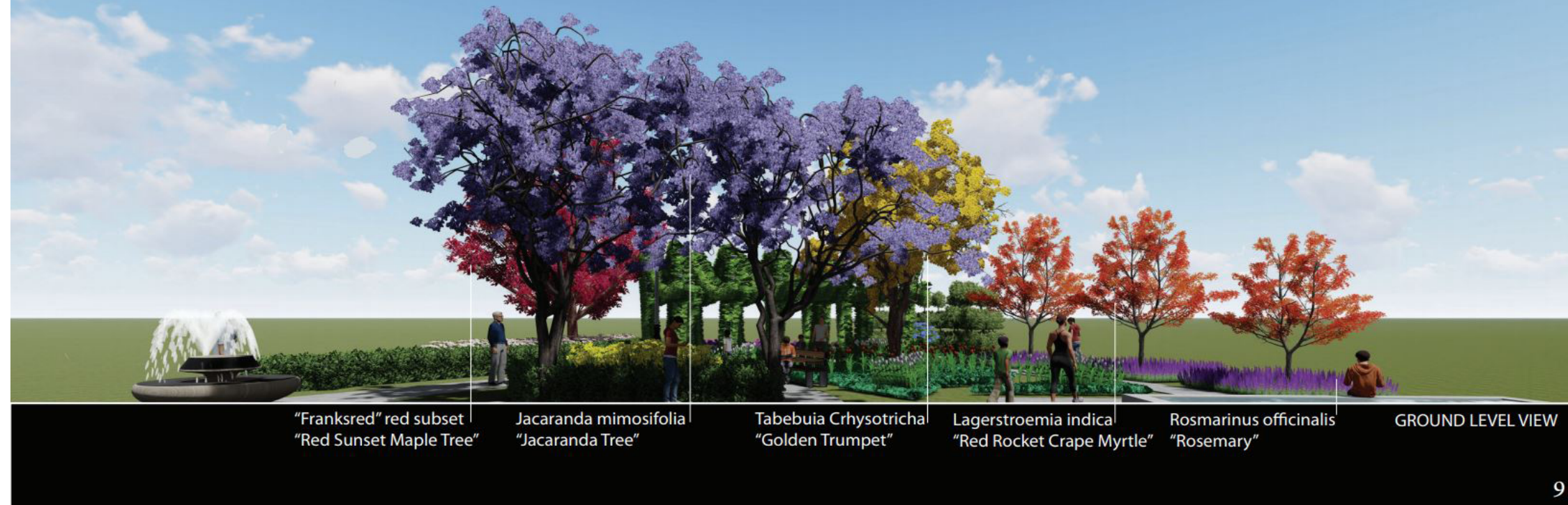
Planting Diagram

Palette Diagram

1

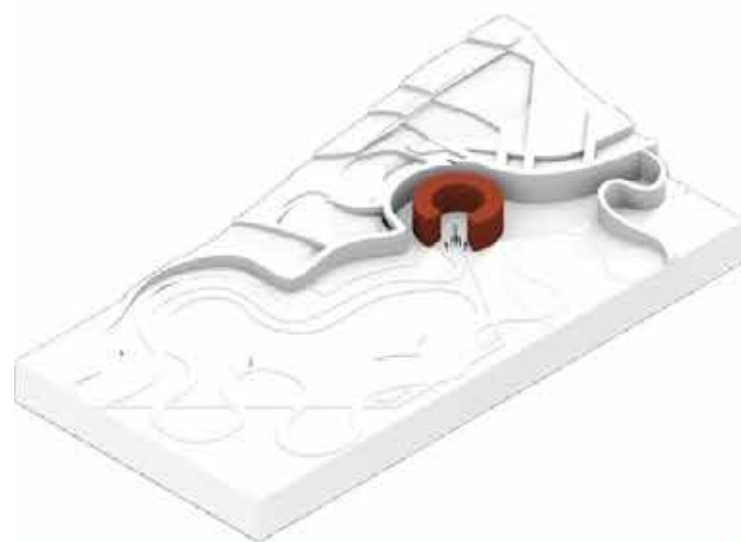
	Spring	Summer	Fall	Winter
<i>Prunus angustifolia</i>				
<i>Cercis canadensis</i>				
<i>Abutus Marina</i>				
<i>Malus 'Donald Wyman'</i>				
<i>Eriogonum fasciculatum</i>				
<i>Artemesia californica</i>				
<i>Heteromeles arbutifolia</i>				
<i>Salvia apiana</i>				
<i>Salvia mellifera</i>				
<i>Muhlenbergia capillaris 'White Cloud'</i>				
<i>Muhlenbergia rigens</i>				
<i>Muhlenbergia microsperma</i>				
<i>Muhlenbergia reverchonii</i>				
<i>Pennisetum 'Fireworks'</i>				
<i>Lupinus arboreus</i>				
<i>Adenostoma fasciculatum 'Nicolas'</i>				
<i>Baccharis pilularis 'Twinpeaks no.2'</i>				
<i>Fragaria chiloensis</i>				
<i>Berberis aquifolium</i>				
<i>Ambrosia pumila</i>				

Section/Ground Level View

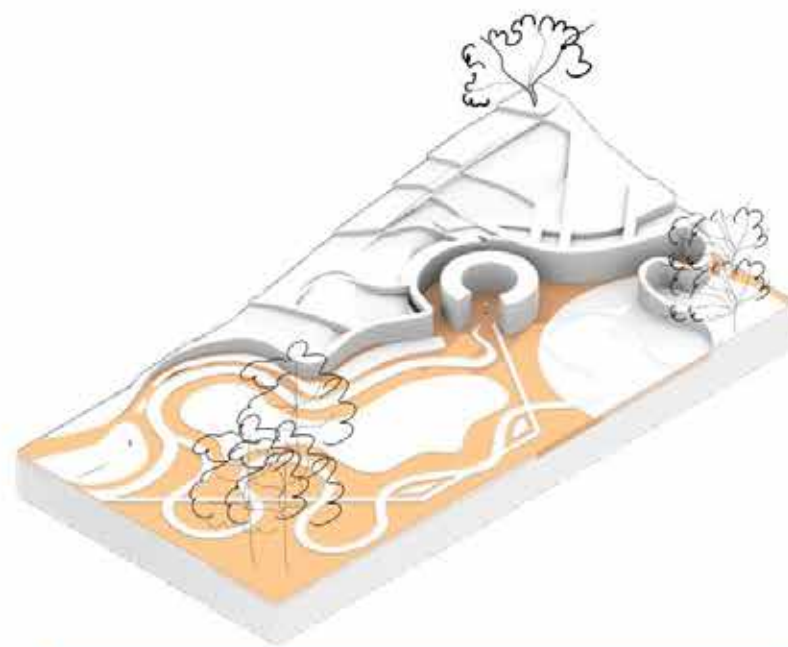


Section/Ground Level View

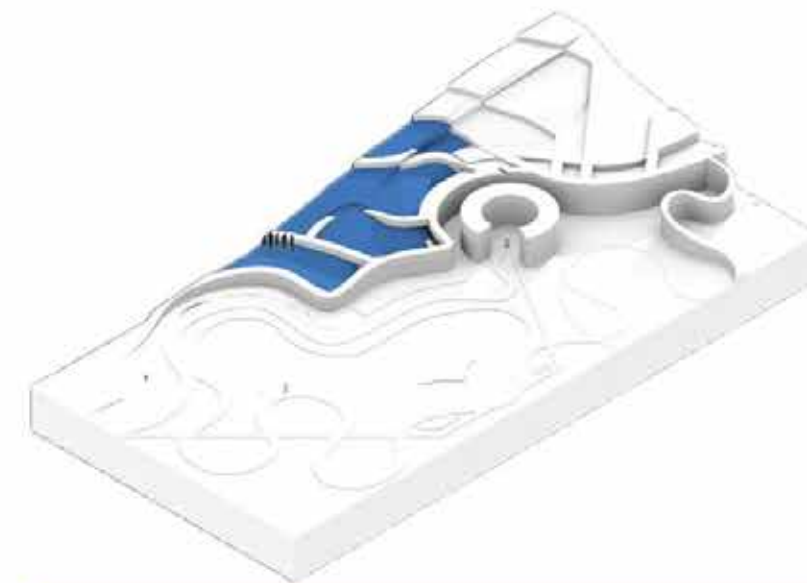




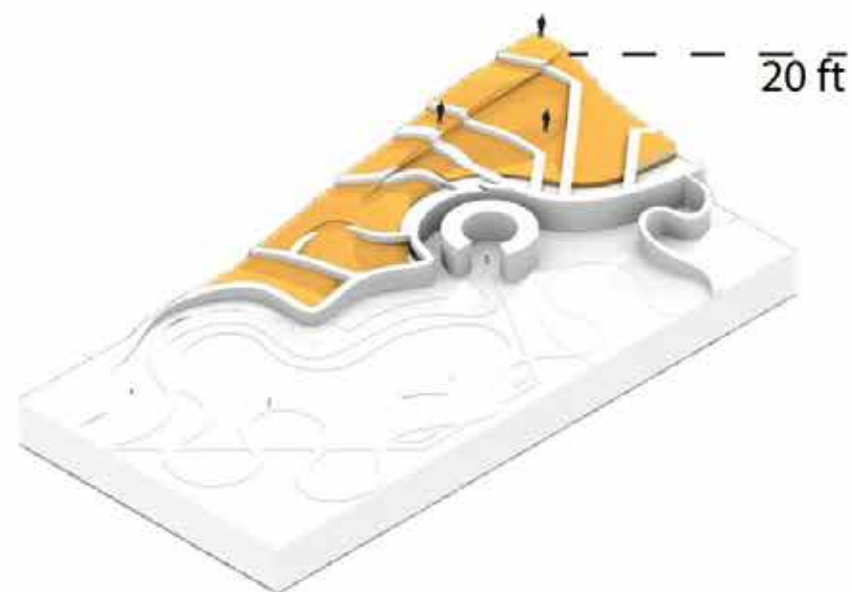
FIXED PROGRAMING
-AMPITHEATRE



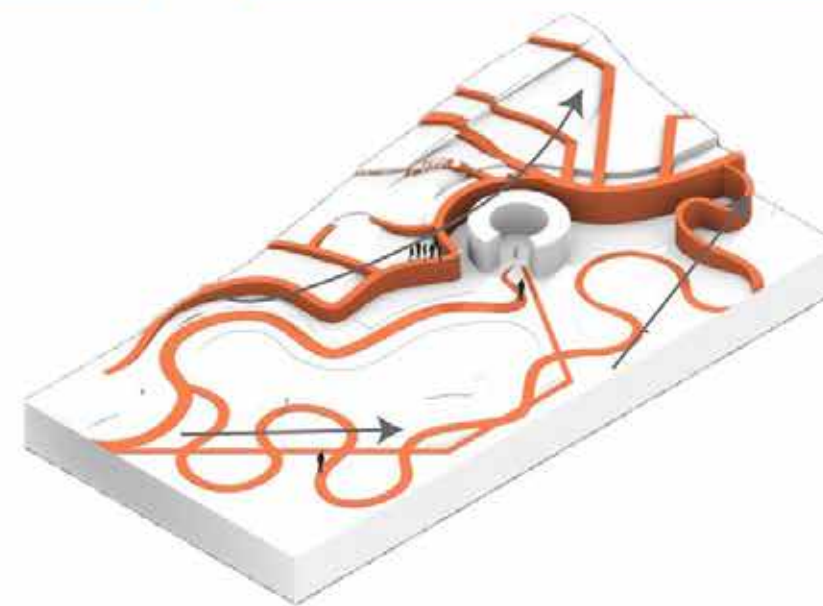
PLANTING
-LIMESTONE CANYON



CULTURAL AND SEASONAL PROGRAMING
-LIGHT AND FLOWER FESTIVAL



TOPOGRAPHY
-20 ft 'CANYON' EXPERIENCE



CIRCULATION PATTERNS
-HABITATUAL FRAGMENTATION

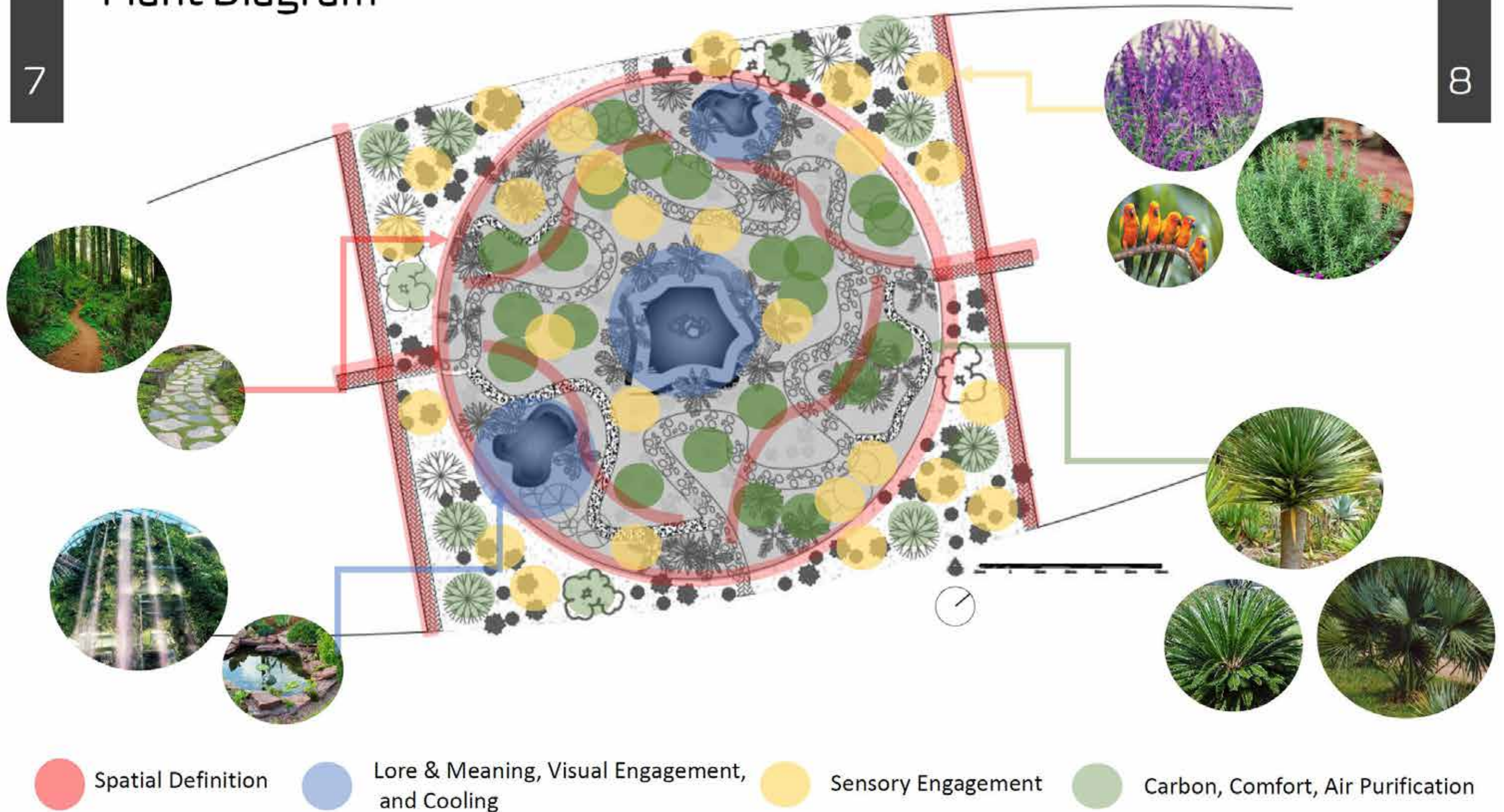


Miranda Andre

Plant Diagram

7

8



Corey Baum



CONCEPT STATEMENT W/ GOALS + PRINCIPLES

Inspired by a fun underground neighbor, a ground squirrel, The Burrow is a fun discovery playground along the squirrel path in which children can learn, explore, and play. This playground is aimed to teach children about the underground natural processes such as the rock formations, rock cycles, and the underground animal habitats that exist. The Burrow has fun mounds in which children can climb, run, and live a day in the life of an animal. Through selected materials based on Orange County's geography and the tunnels built within the mounds, children will gain a sense of the life that exists beneath their feet. Through a learn-by-play approach the educational classes offered by the Nurture by Nature group push children to gain knowledge and understanding of the different ways species live. In addition, it inspires children to be curious and to look for life beyond the life that is in front of them contributing to the end of nature deficit disorder. By teaching children about geography and underground homes children gain a greater sense of place, ecology, and understand that they as a species have a great impact on the natural environment. With this newly found understanding children grow to be environmentally cautious and become stewards of the land.

Connection

-Connect children to all layers of nature, from the sky to beneath the ground

GOALS



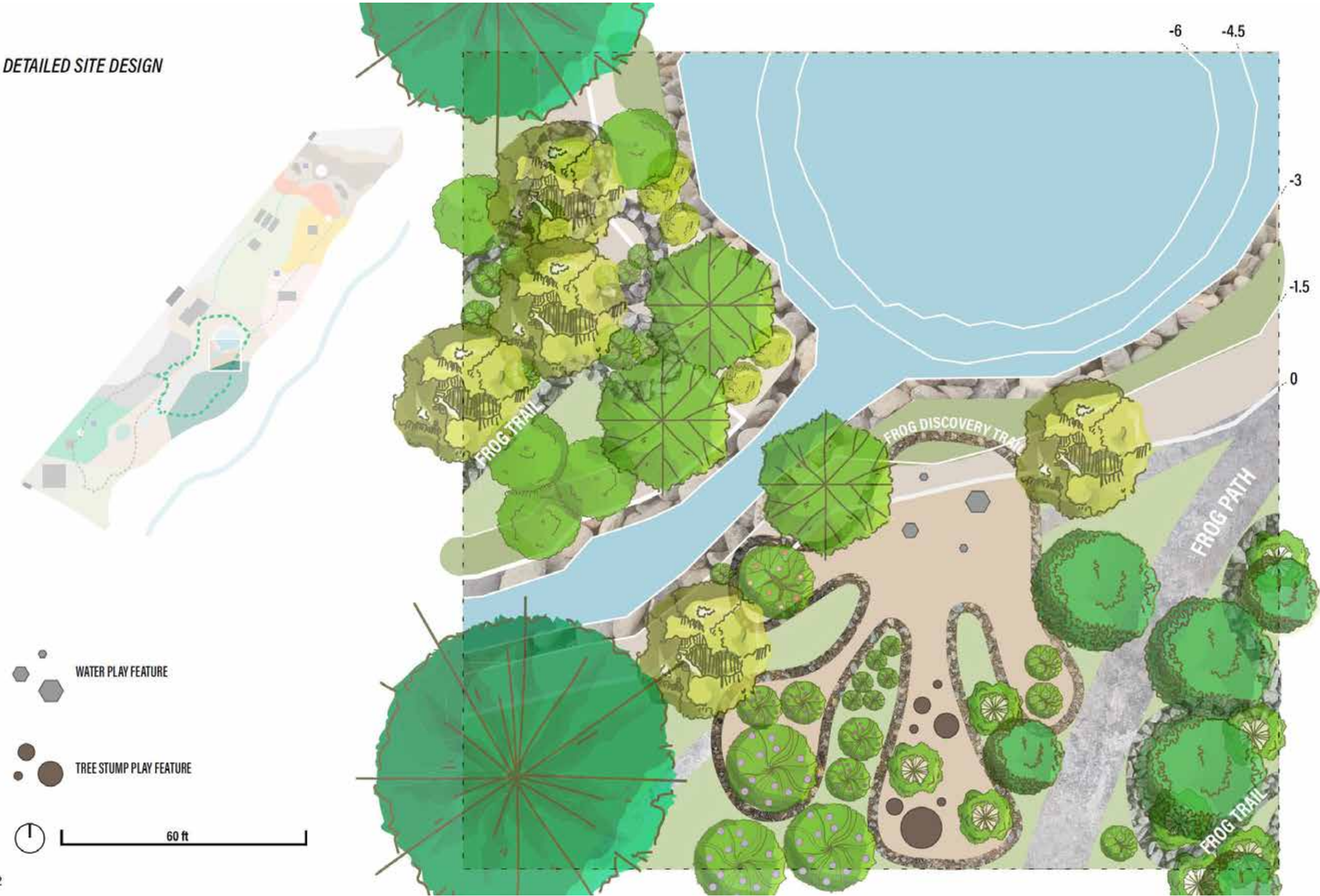
Education

-Teach children through learn-by-play approach

PRINCIPLES



DETAILED SITE DESIGN



RENDERING/ILLUSTRATION OF SPATIAL EXPERIENCE



46

47

Tiffany Shih